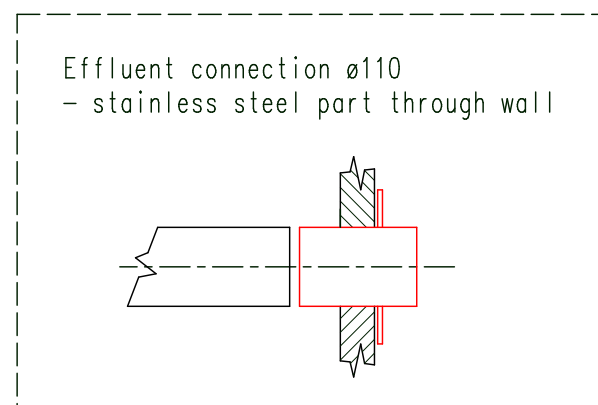
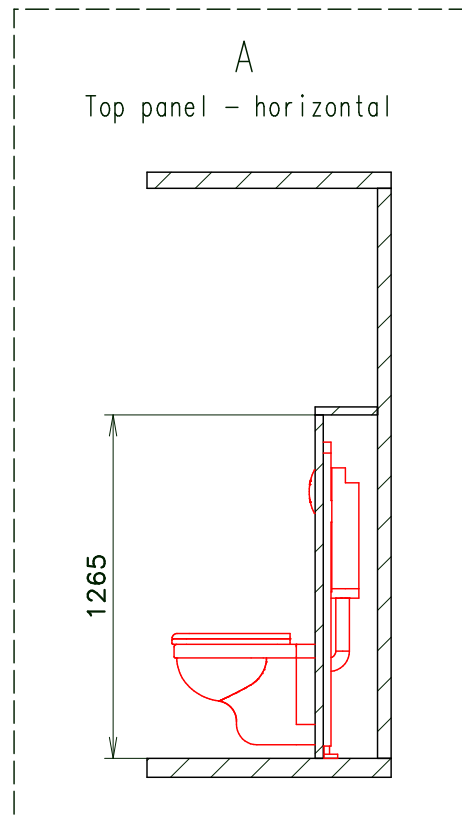
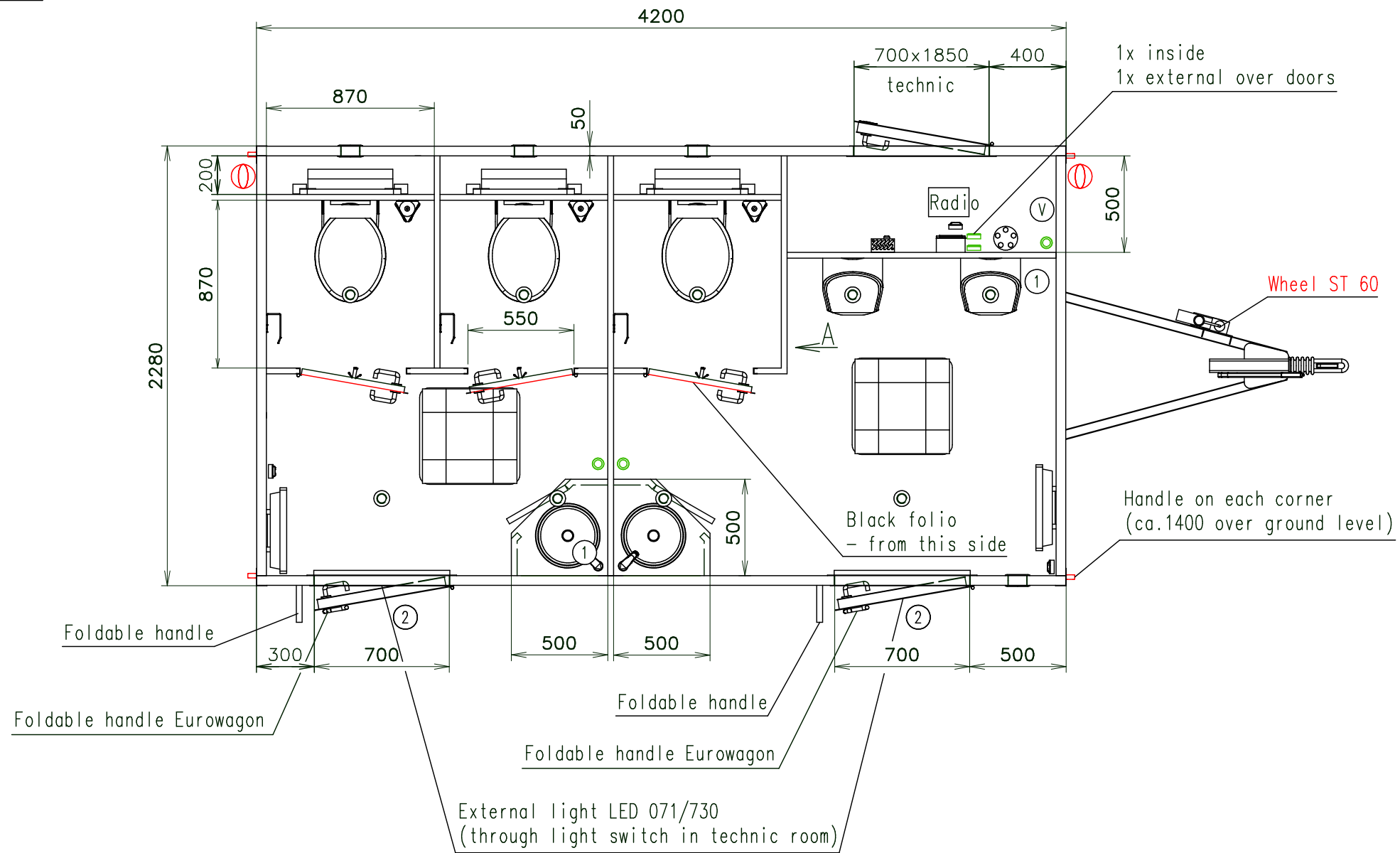


Connection hoses and cables	
Water hose:	✓
Waste water hose:	✗
Electric cable:	✓



(Cabling and piping is not shown on the 3D views and drawings)

Same keys like 3303-37-1

Black folio - doors in red (from this side)

Notes: Working desks in waterproof compact desk Egger (dark color)

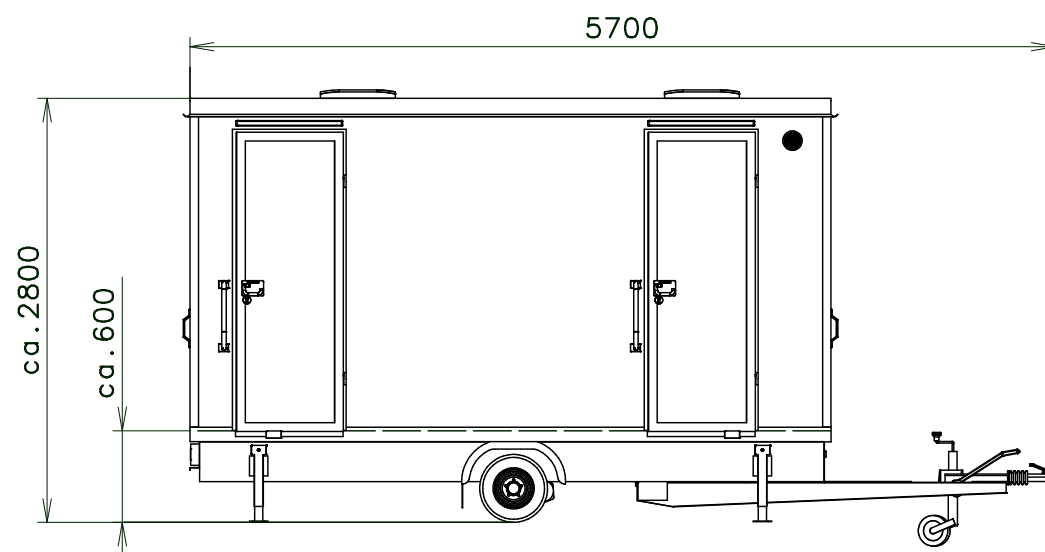
Interior height:	2100 mm	Total weight:	1500 kg
Color:	RAL 9010	Tare weight-estimate:	1300 kg
Floor:	PVC Supreme plus 110	Centre of wheels from rear side:	2120 mm
Date:	11.10.2023	Wheels:	195/50 B10

**EUROWAGON**

Drawing number:  
4393-42-3\_1/2 (Kamphake)

Connection hoses and cables	
Water hose:	✓
Waste water hose:	✗
Electric cable:	✓

- Ⓟ Water connection 3/4" (through the floor) + filter + reduction valve
- Ⓢ Electric connection (through the floor) (230V-16A)
- Ⓣ 2x effluent connection ø110 (through wall) - stainless steel part
- Ⓤ Power point
- Ⓥ Light switch
- Ⓦ Switch board (1100 over floor)
- Ⓧ LED spotlight
- Ⓨ Heating (200W)
- Ⓩ Heating (750W)
- ⓐ Floor drain hole
- ⓑ Sink ø335 (stainless steel) + standard water tap (only cold water)
- ⓓ Hanging toilet
- ⓔ Urinal - Vitra Siko (water flush)
- ⓕ Roof window Dometic (400x400)
- ⓖ Ventilation ø120
- ⓗ Brush toilet
- Ⓢ Toilet paper holder
- Ⓣ Clothes hanger
- Ⓤ Mirror (400x400) + black frame around
- ① Speaker - in the roof
- ② Foldable stairs Serena (steps - alu sheet metal)



(Cabling and piping is not shown on the 3D views and drawings)

Same keys like 3303-37-1

Black folio - doors in red (from this side)

Notes: Working desks in waterproof compact desk Egger (dark color)

Interior height:	2100 mm	Total weight:	1500 kg
Color:	RAL 9010	Tare weight-estimate:	1300 kg
Floor:	PVC Supreme plus 110	Centre of wheels from rear side:	2120 mm
Date:	11.10.2023	Wheels:	195/50 B10

**EUROWAGON**

Drawing number:  
4393-42-3\_2/2 (Kamphake)